

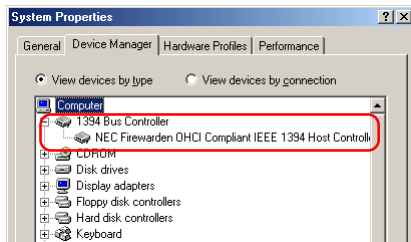
# Registering the DI/DIx/DIH under Windows Millennium Edition (Me)

## Installing Windows Hardware Drivers for the DI/DIx/DIH

### Before You Begin

Confirm that the OHCI-compliant IEEE 1394 interface board has been correctly registered with the system.

Click the My Computer icon on the desktop with the right mouse button and select Properties from the menu that appears. The System Properties dialog will be displayed; click the Device Manager tab.



The IEEE 1394 board or card installed on your system should be listed under “1394 Bus Controller”

If “1394 Bus Controller” is not listed in the Device Manager, or if your IEEE 1394 interface board or card is listed as an unknown or miscellaneous device or is preceded by red or yellow warning icons, follow the instructions in the manual provided with the board to ensure that the drivers are properly installed.

After installing Nikon View 5 (device driver) and restarting the computer, connect your camera to the computer using an IEEE 1394 cable and turn on the camera. The camera is registered automatically.



### Updating Drivers for the DI

If you are already using the DI with Nikon View DX or Nikon Capture, you will need to update the camera drivers. Click [here](#) .



### Before connecting the camera to the computer

Be sure to install Nikon View 5 (device driver) before connecting your camera to the computer.

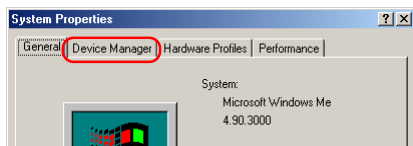


Follow the instructions below to check that the camera has been correctly registered with the system.

## Step 1

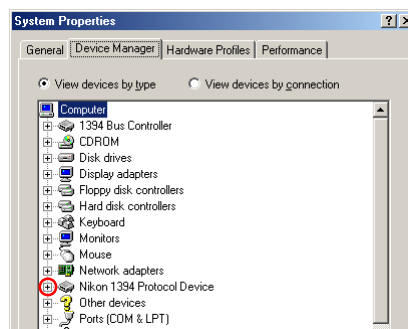
In the following steps, you are confirming that the registration of the camera has completed property.

Click the My Computer icon on the desktop with the right mouse button and select Properties from the menu that appears. The System Properties dialog will be displayed; click the Device Manager tab.




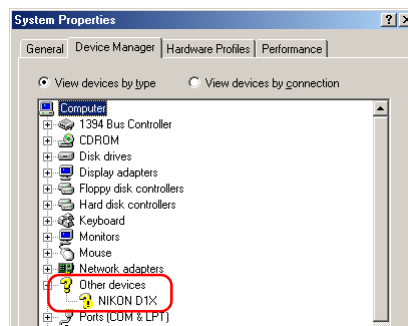
## Step 2

The Device Manager sheet will be displayed. After confirming that “Nikon I394 Protocol Device” is listed in the Device Manager, click the “+” sign to its left.



### If “Nikon I394 Protocol Device” does not appear

If “NIKON DIX(DI/DIH)” is listed under “Other Devices”, click [here](#) .

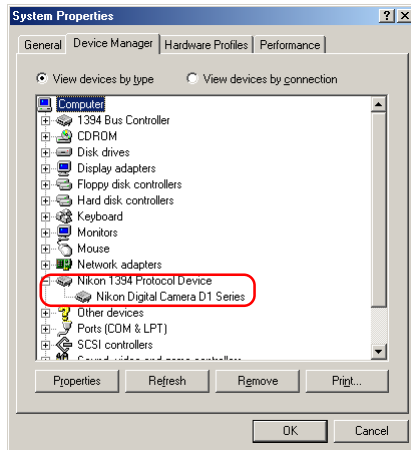


If “Nikon I394 Protocol Device” is not listed in the Device Manager and “NIKON DIX(DI/DIH)” is not listed under Other Devices, disconnect the camera, and restart the computer. When the computer has restarted, reconnect the camera to the computer.



### Step 3

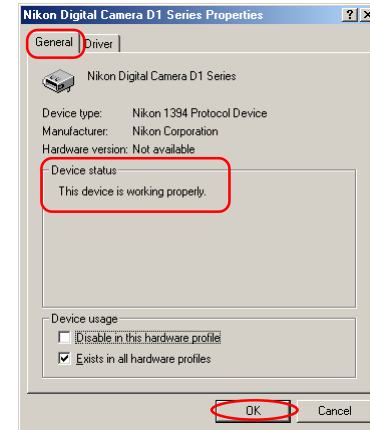
After confirming that “Nikon Digital Camera D1 Series” is listed under “Nikon 1394 Protocol Device,” double click the listing to open the Properties window.



### Step 4

The Nikon Digital Camera D1 Series Properties dialog will be displayed. Click the General tab and confirm that “This device is working properly” appears under “Device status.”

Click **OK** to close the Nikon Digital Camera D1 Series Properties dialog.



Click **OK** to close the System Properties window.

Device registration is now complete.